



PT. ALMIK KURNIA BERSAMA



COMPANY PROFILE

“GIVING QUALITY, BECOME VALUABLE”



PT Almik Kurnia Bersama was established on December 28, 2003, which is a “marketing company” to market standard and job order / customized products with high quality standards produced by PT ATMI Solo, PT ATMI IGI Center, PT ATMI Cikarang, PT Buana Prima Precision. Among the National Manufacturing Industry, ATMI is a name that has been authorized as a quality and reliable partner.

VISION :

**To be the valued partner for fulfilling customer’s needs in
Technology, Engineering, Healthcare, Education, Office &
Industrial Equipment**

MISSION :

**Providing solution for customer needs
Developing positive sinergy
Giving optimum quality & service**

COMPANY LEGALITY

NIB : 9120009622346

NPWP : 002.361.275.7-027.000

AKTE PENDIRIAN : No. 94 Tanggal 28 Desember 2003

**SIUPP : No. 1374/24.1PM.1/31.71/-1.824.27/e/2016
Perdagangan Besar Mesin Peralatan dan
Perlengkapan Lainnya**



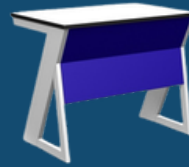
OFFICE, EDUCATION, INDUSTRIAL EQUIPMENT



Mobile File



Cabinet Series



Desk Series



Smart Board



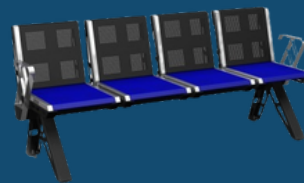
Work Station



Locker Series



Workbench Series



Chair Series



Tool Cart



Tool Cabinet Series



Racking System



METAL INJECTION MOLD

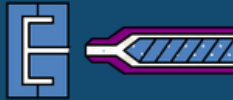
MANUFACTURING PROCESS

KNEADING



Metal powder +
Binder

INJECTION



Shape made by
injection

DEBINDING



To remove
binder

SINTERING



To compact it into a solid
piece

ADVANTAGES

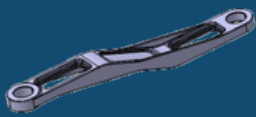
DESIGN FLEXIBILITY

EFFICIENT MATERIAL USAGE

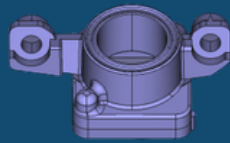
PROCESS SIMPLIFICATION

PARTS SIMPLIFICATION

APPLICATION



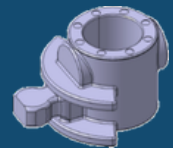
Steering Rod



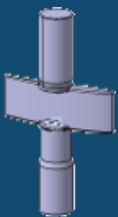
Camera Module



Smartwatch



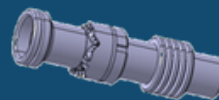
Dual Clutch
Transmission



Vane



Hand Piece
(Medical)



Suspension



Electronic
Parking Break



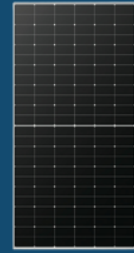
ENGINEERING



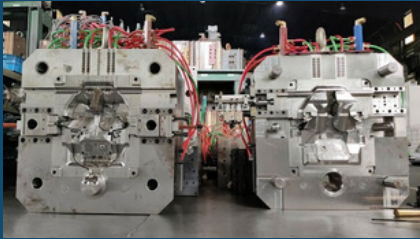
SPECIAL PURPOSE MACHINE



CNC MACHINE



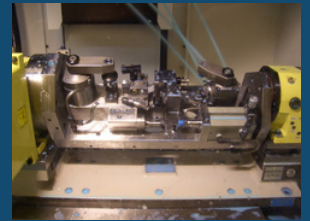
SOLAR PANEL & BATTERY



MOLD & DIES



PRECISION PARTS



JIG & FIXTURES



MEDICAL



Hospital Bed



Bedside Locker



Medicine Cabinet



Laboratorium Cabinet



Coat Cabinet



Waiting Chair

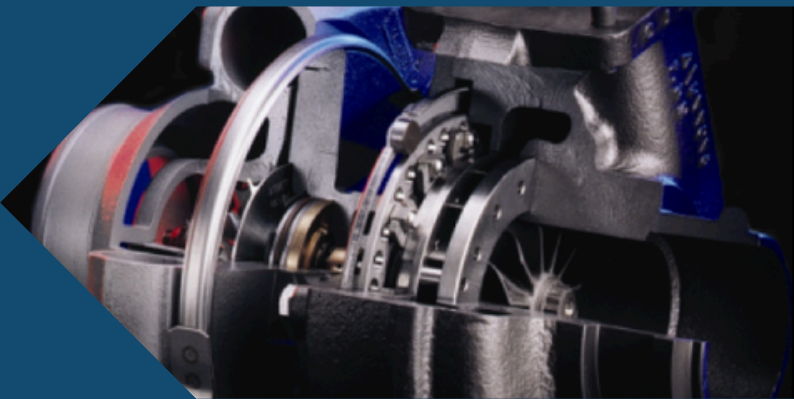
Office & Educational Furniture



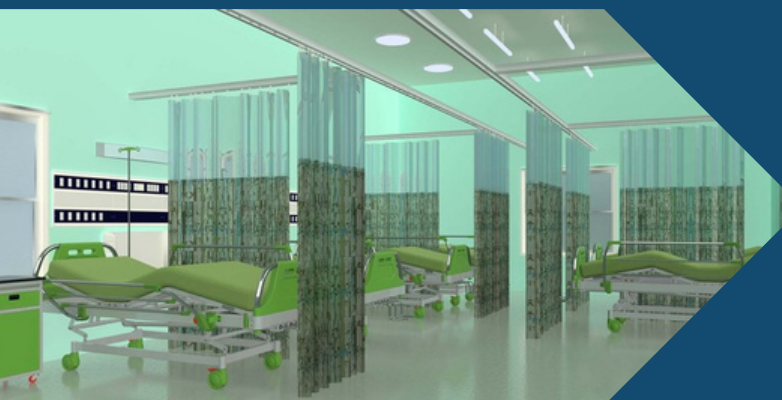
Workshop & Laboratory Furniture



Manufacturing Center & Metal Injection Mold



Medical Equipment





www.ptalmik.com



ptalmik@gmail.com
marketing@ptalmik.com



(021) - 886 55 03



Grha LN Bekasi Bagus Jl. KH. Noer
Ali No. 89 Kalimalang, Bekasi 17144