



ATMIPRO
The Rainbow of Excellence



WORKSHOP EQUIPMENT



Grha LN Bekasi Bagus Jl. KH. Noer
Ali No. 89 Kalimalang, Bekasi 17144



www.ptalmik.com



ptalmik@gmail.com
marketing@ptalmik.com



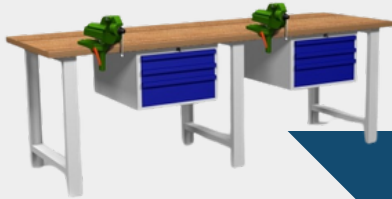
(021) - 886 55 03



WORKBENCH SERIES



2 05 040



WB with 2 Vise



2 05 036



WB with Mobile Drawer

- Material**
 - Steel plate cold-rolled coiled (SPCC - JIS G 3141). Thickness 0.9 - 2.88 mm
 - Solid wood/ Plywood
- Features**
 - Vise
 - Power Socket
- Finishing**
 - Electrostatic Powder Coating

- Material**
 - Square pipe
 - Steel plate cold-rolled coiled (SPCC - JIS G 3141)
 - FCD with 30 mm thickness
- Features**
 - Equipped with one fix vise
 - Equipped with two clamping tool
 - Equipped with foot adjuster
- Finishing**
 - Electrostatic Powder Coating



2 05 042



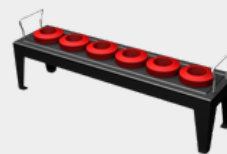
2 05 043

TOOL CART SERIES

- Material**
 - Steel plate cold-rolled coiled (SPCC - JIS G 3141). Thickness 0.9 mm
 - Steel pipe 20x20
- Features**
 - Two static castor and two swivel castor with brake
- Finishing**
 - Electrostatic Powder Coating



2 10 002



2 10 006

TOOL CABINET SERIES



2 09 005 - 2 09 015

- Material • Steel plate cold-rolled coiled (SPCC - JIS G 3141). Thickness 0.9 mm
- Features • Door using swing system
- Adjustable shelves position
- Equipped with one drawer inside with handle (can be pulled up to 100% of the length)
- Top side of cabinet covered by imitation leather
- T-handle (Optional with camlock type)
- Drawer

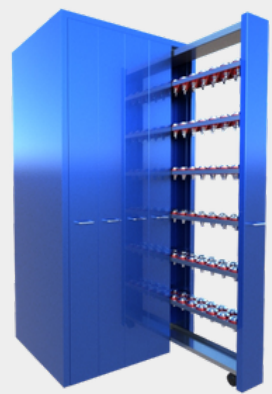
Finishing • Electrostatic Powder Coating

- Material • Steel plate cold-rolled coiled (SPCC - JIS G 3141)
- Features • Equipped with cam lock type
- Adjustable shelving
- Available for BT30, BT40, HSK
- Integrated cam lock type with handle
- Finishing • Electrostatic Powder Coating



2 02 022

2 02 023



2 02 024



2 09 001



2 09 002



2 09 016

- Material • Steel plate cold-rolled coiled (SPCC - JIS G 3141). Thickness 0.7 - 0.9 mm
- Features • Central locking system
- The drawer uses a construction which runs on ball bearings
- Cam lock type
- Plastic handle
- Rubber wheel castor
- Finishing • Electrostatic Powder Coating



2 09 017

2 09 018

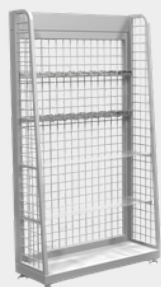
2 09 019

2 09 020

2 09 021



RACKING SYSTEM



1 07 014



0 07 001 - 0 07 004

- Dimension (mm)
 - 900 x 460 x 2130 (0 07 001)
- Material
 - Steel plate cold-rolled coiled (SPCC - JIS G 3141). Thickness 0.9 - 1.8 mm
- Finishing
 - Electrostatic Powder Coating

- Dimension (mm)
 - 2000 x 600 x 2000 (2 07 011)
 - 2000 x 600 x 2000 (2 07 013)
- Material
 - Steel plate cold-rolled coiled (SPCC - JIS G 3141). Thickness 1.4 - 2.8 mm
 - MS Pipe, MS Square Pipe, MS Profile
- Finishing
 - Electrostatic Powder Coating

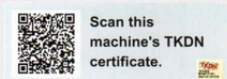


2 07 011



2 07 013

CNC PRODUCT



TKDN 43.00%



Specifications		
Table Size	mm	1000 x 320
T-slot (N/W/D)	mm	3 / 14 / 105
Max table loading weight	kg	400
X/Y/Z	mm	650 / 400 / 500
Spindle speed range	rpm	8000
Spindler taper		BT40
X/Y/Z rapid feed speed	m/min	24 / 24 / 20
Spindle nose to worktable distance	mm	120 - 260
Spindle center to column distance	mm	440
Spindle motor power	kW	5.5
Magazine capacity		12
Tool magazine type		Disk
Positioning accuracy		0.008
Repeatability	mm	0.05 / 300
Net weight	kg	3200

We Provide Special Request Model and Size, Please Contact Us For Further Information

